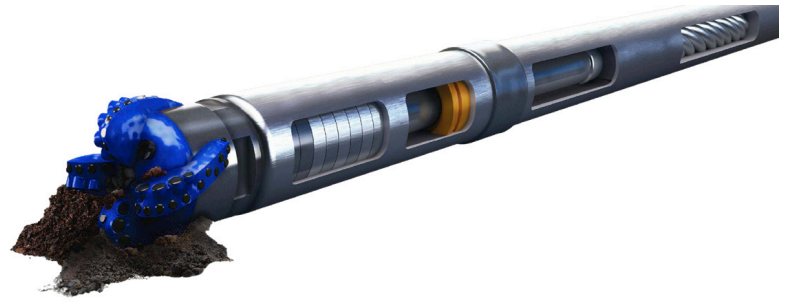


PREMIUM POWER

Altitude’s CLAW Premium Power Sections are engineered to deliver industry-leading flow rates and torque. Each tool size offers a range of speed options, designed to enhance Rates of Penetration (ROP) by aligning bit type and RPM with target formations.



CLAW power sections are available in multiple elastomer types to ensure compatibility with various drilling fluids, temperatures, and differential pressures, tailored to specific applications.

			Power Section Performance							
Size (in)	Model	Name	Flow Range (m3/min) MIN	Flow Range (m3/min) MAX	Bit Speed (rpm) MIN	Bit Speed (rpm) MAX	Speed Ratio (Rev/m3)	Max Differential Pressure (kPa)	Max Operating Torque (Nm)	Torque Slope (Nm/kPa)
5.15"	Claw 480	5.15" C2 Claw 480	0.76	1.52	96	193	0.127	13,450	12,644	0.940
5.15"	Claw 640 EW	5.15" C2 Claw 640 EW	0.76	1.52	128	257	0.169	12,650	10,641	0.841
5.15"	Claw 640	5.15" C2 Claw 640	0.76	1.52	128	257	0.169	14,300	10,439	0.730
5.15"	Claw 700	5.15" C2 Claw 700	0.76	1.32	138	240	0.182	13,300	9,310	0.700
5.15"	Claw 750	5.15" C2 Claw 750	0.76	1.52	151	301	0.198	17,700	11,349	0.641
5.15"	Claw 850	5.15" C2 Claw 850	0.76	1.52	164	328	0.216	16,250	10,074	0.620
5.25"	Claw 520	5.25" C2 Claw 520	0.76	1.61	104	221	0.137	13,800	14,380	1.042
5.25"	Claw 650	5.25" C2 Claw 650	0.57	1.52	98	261	0.172	15,400	11,654	0.757
5.62"	Claw 650	5.62" C2 Claw 650	0.57	1.52	98	261	0.172	15,400	11,654	0.757
6.60"	Claw 410	6.60" C2 Claw 410	1.23	2.75	133	297	0.108	13,150	16,438	1.250
7.00"	Claw 250	7.00" C2 Claw 250	1.23	2.75	81	182	0.066	13,450	26,057	1.937
7.00"	Claw 350	7.00" C2 Claw 350	1.14	2.46	105	226	0.092	10,800	18,882	1.748
7.00"	Claw 400	7.00" C2 Claw 400	1.14	2.75	121	292	0.106	15,250	17,927	1.176

Custom design configurations can be built on request.